

LaSalle Mariners Yacht Club
38th Annual Sail for Hospice
Sunday September 8, 2024

Sailing Instructions

1 RULES

- 1.1 This regatta will be governed by the rules as defined in the Racing Rules of Sailing 2021-2024. The prescriptions of Sail Canada located at www.sailing.ca shall apply.
- 1.2 The equipment rules of sailing shall be used, located at www.sailing.org

2 NOTICES TO COMPETITORS

- 2.1 Notices to competitors will be posted on the official notice board located inside the LMYC clubhouse. Notices may also be posted on noticeofrace.net and at lasallemariners.ca

3 CHANGES TO SAILING INSTRUCTIONS

- 3.1 Any changes to sailing instructions will be posted before 0900 on Sunday September 8, 2024.

4 SCHEDULE OF RACES

- 4.1 Sunday September 8, 2024 is the LaSalle Mariners Yacht Club 38th Annual Sail for Hospice.
- 4.2 The scheduled time of the warning signal for the first race is 12:55pm.
- 4.3 The scheduled time of the skippers meeting is 12noon.

5 RACING AREAS

- 5.1 Attachments A1, show the maps and location of the courses.

6 THE COURSES AND MARKS

- 6.1 See courses, attachments and descriptions below. Lines shown on maps are approximate.

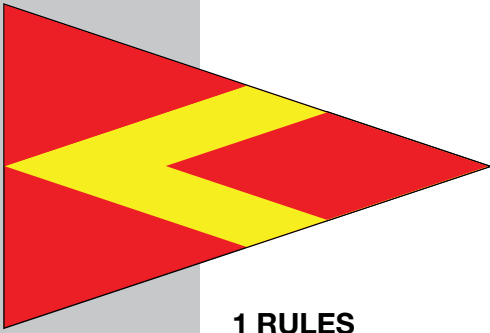
COURSE 1 (11.24 NM) See Attachment A1

Start will be in the vicinity of **DF27** on the northeast edge of Fighting Island in front of Gil Maure Park. Boats will head downstream using the Fighting Island Channel, through the cut at the south end of Fighting Island leaving **RED BUOY DF8 to PORT**. Continuing downriver, passing **GREEN SPAR DF1 to STARBOARD**. Then head downriver and **ROUND RED BUOY D78 to PORT**. Head upstream leaving **RED BUOY DF4 then TURKEY ISLAND to STARBOARD**. Continue through the cut, then leave **BIFURCATION MARK DGB to PORT** and continue to the finish located between the **ORANGE MARK** and the Race Committee Boat near LMYC off the south tip of Grassy Island.

COURSE 2 (8.06NM) See Attachment A2

Start will be in the vicinity of **DF27**, on the North East side of Island, in front of Gil Maure park. Boats will head downstream using the the Fighting Island Channel, through the cut at the South end of Fighting Island leaving **RED BUOY DF8 to PORT**. Continue downriver and **ROUND GREEN SPAR DF1 to PORT** then head upstream leaving **RED BUOY DF4 then TURKEY ISLAND to STARBOARD**. Continue upstream through the cut, leaving **BIFURCATION MARK DGB to PORT** and finishing between the **ORANGE MARK** and the Race Committee boat near LMYC off the South tip of Grassy Island

SAILING INSTRUCTIONS



COURSE 3 (6.65NM) See Attachment A3

Start will be in the vicinity of **DF27** in the northeast edge of Fighting Island in front of Gil Maure Park. Boats will head downstream using the Fighting Island channel, through the cut at the South end of Fighting Island leaving **RED BUOY DF8 to PORT**. Continue downriver and **ROUND GREEN SPAR DF3 to PORT** then return upstream leaving **RED BUOY DF4 then TURKEY ISLAND to STARBOARD**. Continue through the cut then leave **BIFURCATION mark DGB to PORT**. and continue to the finish located between the **ORANGE MARK** and the Race Committee boat near LMYC at the south tip of Grassy Island.

7 THE START

- 7.1 Races will be started using RRS 26.
- 7.2 The starting line will be between DF27 and the staff on the Race Committee boat displaying the orange flag.
- 7.3 The Race Committee will issue 5 blasts with a horn, 1 minute prior to the warning signal for the first class (PHRF) start unless the race has been postponed. If the race has been postponed, the warning signal will be made 1 minute after the removal of the "AP" flag with one horn blast.

8 THE FINISH

- 8.1 The finish line will be between the staff of an orange mark displaying the orange flag and the staff of the Race Committee boat displaying the blue flag or 'S' flag.

9 PENALTY SYSTEM

- 9.1 For all classes, RRS 44.1 is changed so that the Two-Turns Penalty is replaced by the One-Turn Penalty.

10 PROTESTS AND REQUESTS FOR REDRESS

- 10.1 As this is a fun and fundraising race, protests will only be allowed in cases of serious damage or injury where boats' insurance companies must be involved. Please follow the rules, do the right thing, do your turns and have FUN !!!
- 10.2 Any boats protesting shall advise the Race committee before or at the finish line.
- 10.2 For each class, the protest time limit is 60 minutes after the last boat has finished.

11 SCORING

- 11.1 In accordance with RRS 90.3 (a) Appendix 'A' will apply. The low points system will then apply.

12 SAFETY REGULATIONS

- 12.1 A boat that retires from a race shall notify the Race Committee as soon as possible.

13 PHOTO AND VIDEO DISCLAIMER

- 13.1 By participating in this event, competitors give absolute right and permission for any photograph and video footage taken of themselves, and the boat they are sailing during the event to be published in any media whatsoever, for either editorial, advertising or to be used in press information without compensation.

14 RADIO COMMUNICATION

- 14.1 Except in an emergency, a boat that is racing shall not make voice or data transmissions and shall not receive voice or data communication that is not available to all boats.

15 PRIZES

- 15.1 The 1st, 2nd, and 3rd in each class will be awarded flags.
- 15.2 There will be a Hospice Flag awarded to the highest fundraiser
- 15.3 The Grandpa P.H.R.F Trophy will be awarded to the boat with the best corrected elapsed time.
- 15.4 There will be a raffle table after the race as a continued fundraiser.

SAILING INSTRUCTIONS

16 DISCLAIMER OF LIABILITY

16.1 Competitors participate in the regatta entirely at their own risk. See RRS 3, Decision to Race. The organizing authority will not accept any liability for material damage or personal injury or death sustained in conjunction with or prior to, during , or after the regatta.

17 INSURANCE

17.1 Each participating boat shall be insured with valid third-party liability insurance. A copy of the insurance shall be included with registration.

18 FURTHER INFORMATION

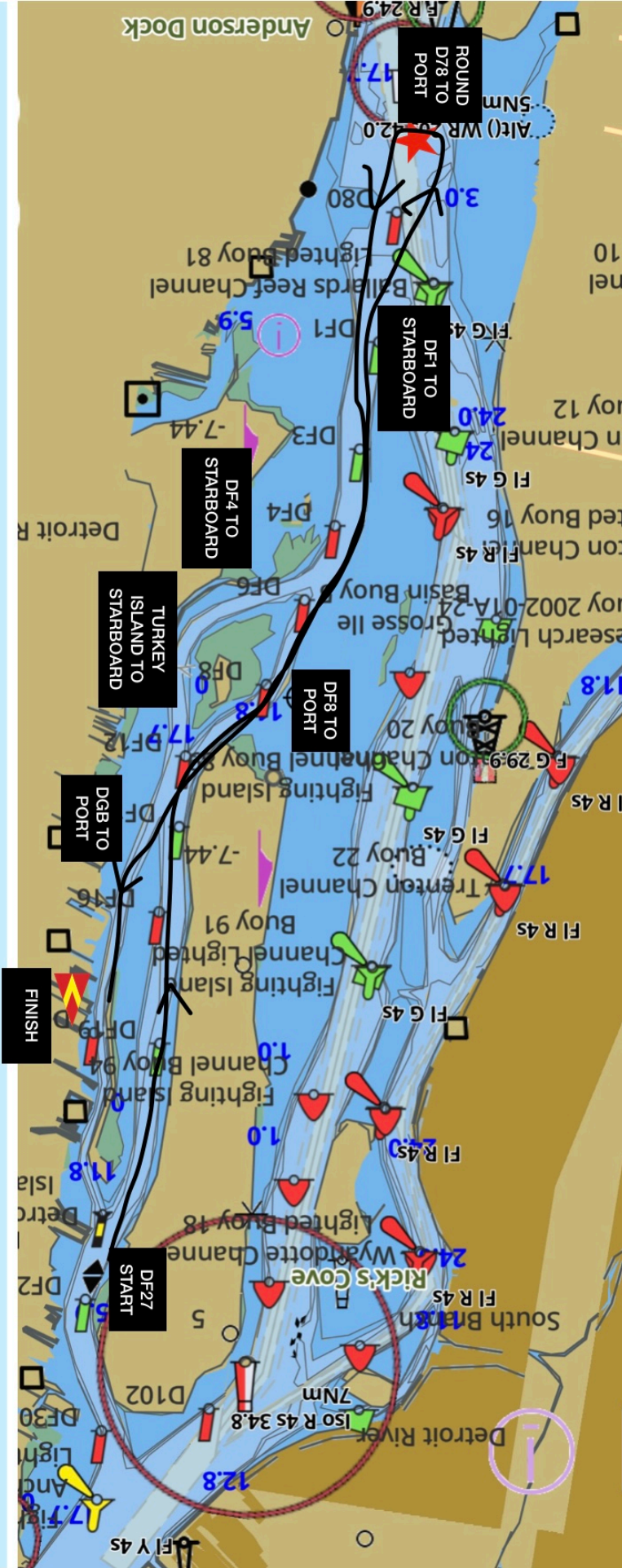
18.1 For further information, please contact:

Chris Wysynski (226) 996-9220 or cwysynski@yahoo.ca

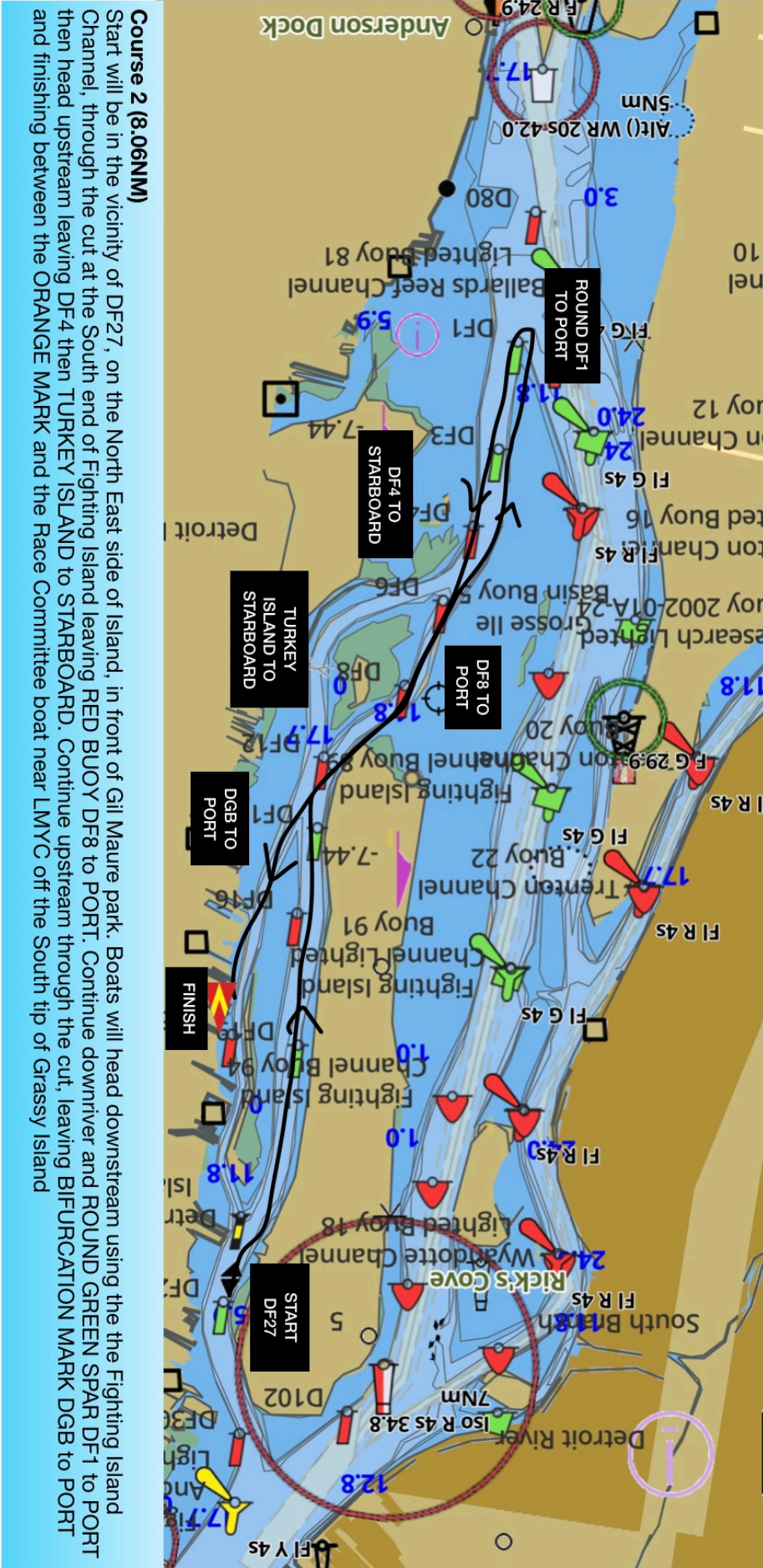
Christine Drouillard (519) 971-1313 or surleau@gmail.com

Hospice Course 1

Course 1 (111.24 NM)
 Start will be in the vicinity of DF27 on the northeast edge of Fighting Island in front of Gill Maure Park. Boats will head downstream using the Fighting Island Channel, through the cut at the south end of Fighting Island leaving RED BUOY DF8 to PORT. Continuing downriver, passing GREEN SPAR DF1 to STARBOARD. Then head downriver and ROUND RED BUOY D78 to PORT. Head upstream leaving RED BUOY DF4 then TURKEY ISLAND to STARBOARD to STARBOARD. Continue through the cut, then leave BIFURCATION MARK DGB to port and continue to the finish located between the ORANGE MARK and the Race Committee Boat near LMYC off the south tip of Grassy Island.



Hospice Course 2



Course 2 (8.06NM)
 Start will be in the vicinity of DF27, on the North East side of Island, in front of Gil Maurice park. Boats will head downstream using the the Fighting Island Channel, through the cut at the South end of Fighting Island leaving RED BUOY DF8 to PORT. Continue downriver and ROUND GREEN SPAR DF1 to PORT then head upstream leaving DF4 then TURKEY ISLAND to STARBOARD. Continue upstream through the cut, leaving BIFURCATION MARK DGB to PORT and finishing between the ORANGE MARK and the Race Committee boat near LMWC off the South tip of Grass Island

Hospice Course 3

